

For the Navy Newport CERCLA site cleanups...

Please think

Watersheds

... and going to?

Where is the stuff coming from?

by Dave Brown, retired
resource-econ professor
& RAB Community Co-chair
July 2021 (refined Aug 2021)

Should allow for bigger storm surges?

Who will be monitoring & testing?

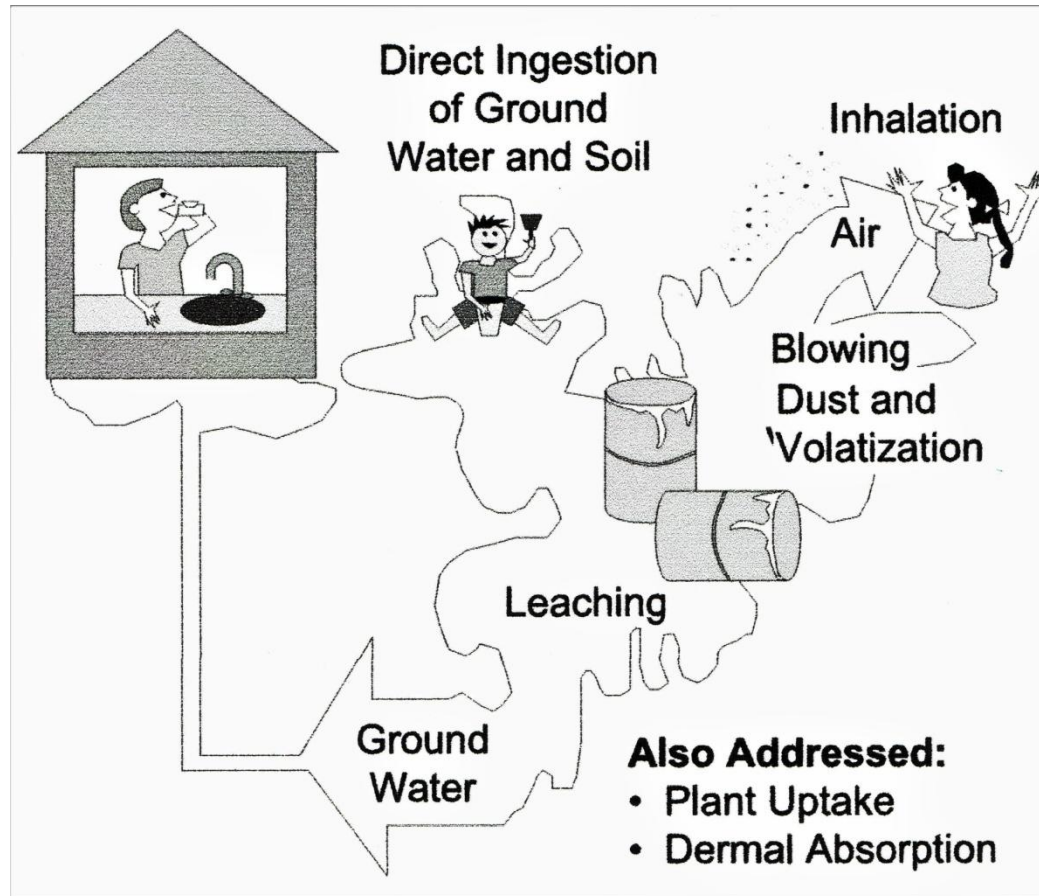
Harmful enough to take action?

What improved practices to encourage?

How to energize inter-group ways to do this?

**Your suggestions
for improvement
welcomed**

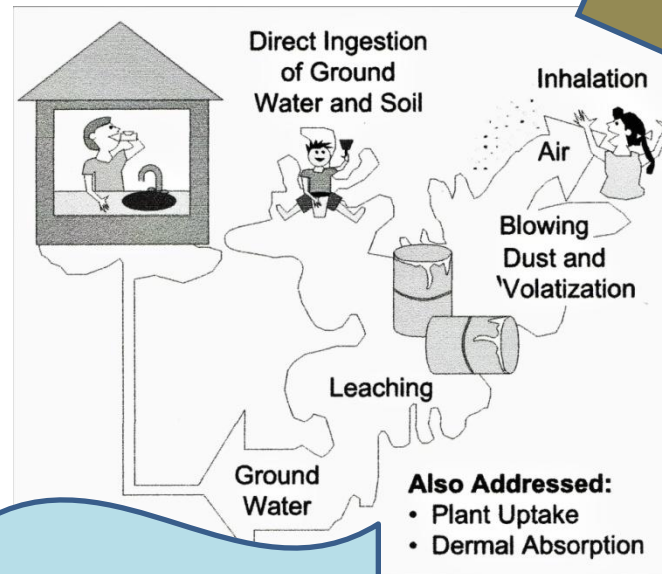
When our RAB began in 1996, groundwater seepages were seen as near-site exposure pathways.



From [Soil Screening Guidance: Fact Sheet, EPA 1996](#), page 4.

Now there is new awareness of upstream contaminants, shore outflows, rising sea levels & weather changes.

Bigger rain storms
Fertilizer & pesticide runoffs
Oils from pavements
Poop from pets & wildlife
PFAS



With changing ecologies, new grass, pollinator, shrub & tree mixes can have key roles as absorbers, buffers & soil covers.

Coastal flooding
Stronger wave action
Changing shorelines
Harbor & sea-food contamination?
Undercutting of earlier cleanups?

Melville Park Ponds & Reservoir,
next to TF 1, into harbor area

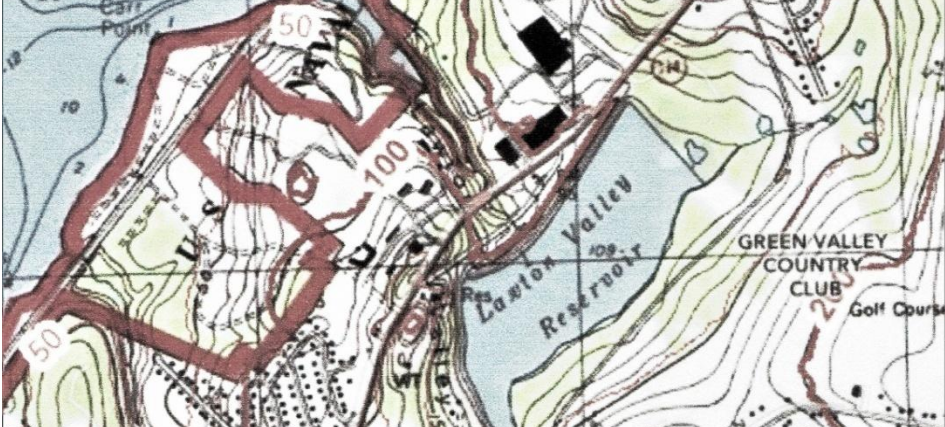
*What watersheds are
the Navy cleanup sites
part of?*



Outlet below housing near TF 2



Lawton Brook & Reservoir, below TF 3,
into Weaver Cove, after flowing near
Raytheon & subdivisions

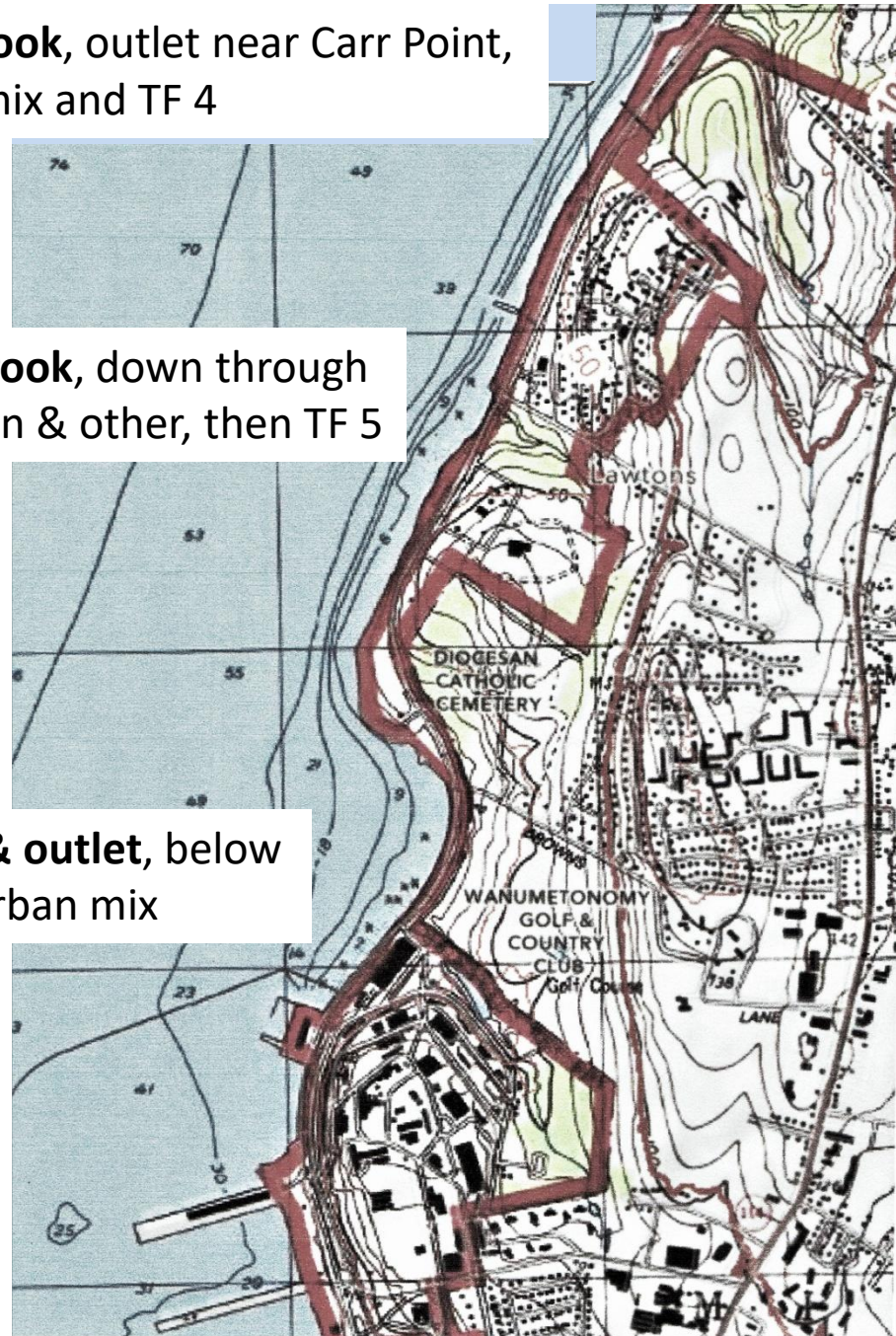


Norman's Brook, outlet near Carr Point,
after urban mix and TF 4

*...and farther
South*

Gomes Brook, down through
subdivision & other, then TF 5

NUSC pond & outlet, below
golf club & urban mix



So it seems to me that *the remaining Navy cleanup work can best be done in watershed, shore-area & local contexts, not as isolated blobs. What do you think?*

Some new initiatives may help us to achieve this...

Naval Station Newport hazard resilience review (MIRR), draft report expected early 2022 <https://www.richamp.org/case-studies-and-demo/newport>

RIDEM's draft Aquidneck Island Watershed Plan

<http://www.dem.ri.gov/programs/benviron/water/quality/pdf/watplan-aquidneck-island-slides.pdf>

EPA's Soak Up the Rain <https://www.epa.gov/soakuptherain> network and [its New England webinar series](#) give us examples of fresh approaches.

EPA's Southeast New England Program (SNEP) <https://www.epa.gov/snep> is providing technical and financial helps to interested communities.

Are there other unified efforts that we on the RAB might usefully mesh with?

It's not just the whats. It's also the hows.

Fresh ways of blending old modes with the new might help our cleanups & RAB doings?

Old Era

Bureaucratic silos
Theory X mgt style
Clunky committees
Stiff hearings
Postponements
Long documents
Hard-to-find maps,
NIMBYism

New Era

*Inter-program gateways
Theory Y mgt styles
Flexible partnerships
Sessions, data, map overlays online
Better consensus-building methods
Ways to involve those who can't be there
Focus on common-good solutions*

The 1996 [RAB Mission Statement & Meeting Rules](#) were good steps in the right direction, but may need updating.

We can learn lots from you younger staff on the Navy-RIDEM-EPA-TetraTech teams.

New local residents, emerging leaders & town/city staff likewise.

The latest in climate-change info & resilience approaches

Innovative ways to use online tools & media

Ways to engage new-era RAB members.

,,,and much more

Ideas from other places where you have worked & lived

Fresh ways to partner with others

So newbies, please don't be shy about entering into our RAB discussions and internet exchanges.